

Position Title: Linesperson	Position No: Various	
Supervisor/Manager Title: Work Group Leader		
Business Unit: Distribution	Work Group: Field Delivery	
Classification: TSP2	Date Evaluated:	Date Reviewed:

POSITION PURPOSE

- An experienced worker exercising trade skills under general supervision.
- This position is responsible for completing and or assisting overhead and/or underground maintenance and construction tasks on the job site, to meet quality and time targets.
- This position is responsible for completing and or assisting overhead and/or underground maintenance and minor construction tasks in a service and response role, on the job site, to meet quality and time targets

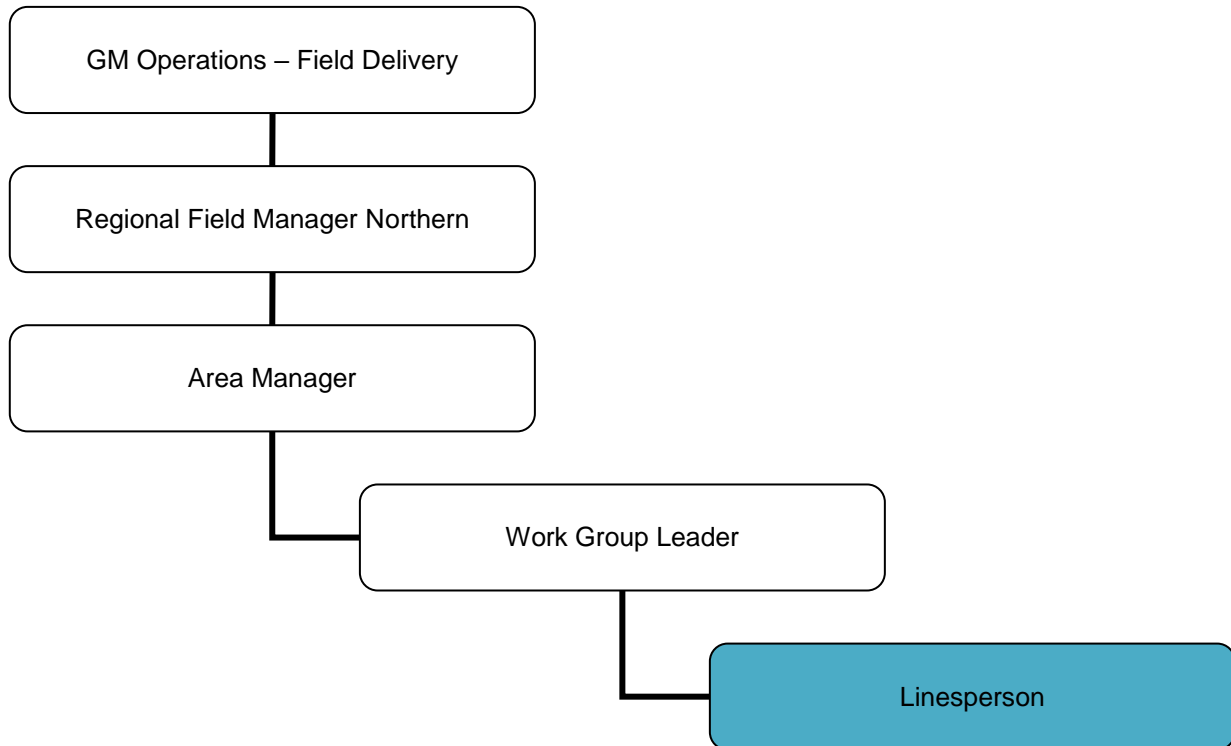
KEY ACCOUNTABILITIES

- Ensure satisfactory customer relations are maintained.
- Responsible for performing tasks to meet cost, quality and time targets.
- Responsible for the installation and maintenance tasks in accordance with appropriate standards, work practices and regulations in a timely, efficient and safe manner.
- Responsible for maintaining eligibility for required certification and authorisation.
- Responsible for gathering and recording of accurate data associated with work activities.
- Responsible for employees under their direction of a lower or similar classification.
- Responsible for identifying and implementing risk control measures to assigned work tasks to provide a safe work environment.
- Compliance with all relevant Legislation, standards, work procedures and practices.
- Demonstrate a personal commitment to Ergon Energy's Safety & Environmental Programs, QA and Equal Employment Opportunity objectives, to ensure personal safety and the safety of others, a workplace free from discrimination and harassment and a philosophy of quality assurance and pollution prevention.
- Contribute to the continuous improvement of the Ergon Energy Safety Management System and the local area Health and Safety Program and undertake all work in accordance with Ergon Energy's Workplace Health and Safety policies and procedures.

DUTIES

- Performs skilled trade work commensurate with experience & accreditation.
- Ensure completion of on-site risk assessments and implement control measures in line with the employee's level of skill and training.
- Install, repair, commission and maintain various items of electrical equipment and plant.
- Maintenance and minor repair of standard plant, tools and equipment.
- Understand and comply with quality systems and standards.
- Ensure correct completion of relevant documentation in line with systems and processes.
- Responsible for the care and safe use of assigned vehicles /plant, tools/ equipment, hazardous substances.
- Provide guidance and instruction to others within scope of experience & accreditation.
- Provide updates on daily activities.
- Perform inspections on overhead and underground plant and equipment.
- Perform HV Distribution switching up to level 2.
- Perform Distribution switching up to and including level 2 or level 3 non complex restricted by location and equipment
- Constructing, maintaining, operating and repairing distribution substation, lines and DSA plant and equipment.
- Use relevant Corporate computer-based applications.
- Test inspect and record defects found in distribution system.
- Constructing and maintaining communications pilot and fibre optic cable (excluding testing, terminating and joining of fibre optic cables).
- Perform basic supply and voltage problem investigations.

ORGANISATION CHART



JOB DIMENSIONS AND RELATIONSHIPS

- Liaise with internal and external customers.
- Required to work under general supervision.
- Attends team meetings as required.
- Maintains good working relationships with associates.
- Achieves set targets and goals with specific direction.

Financial:

Subordinate staff payroll	\$	Direct relationship to Capital Works Budget	\$
Operating Budget	\$	Other budget influences	\$

PERSON SPECIFICATION

EDUCATION/CERTIFICATION

Essential

- Year 10 education or equivalent demonstrated relevant work experience.
- Ability to obtain and maintain relevant Drivers and/or Plant Licences.
- Maintain Relevant Statutory requirements.
- One of the following:
 - * Qld ELB Trade Certificate (EFM)
 - * Qld ELB Trade Certificate (ELP)
 - * Qld ELB Trade Certificate - Cable Jointer (open or restricted).

Desirable

- Specific licences to be included for individual requirements (refer competency matrix).
- First Aid Certification (level as required by work location needs).
- Level 1 & 2 HV Switching authority.
- Level 1 & 2 HV Switching authority.

SELECTION CRITERIA

Essential

- Knowledge of relevant legislation and standards.
- Computer and application skills including word, email and window based applications.
- Knowledge of overhead / underground construction, operation and maintenance, and associated activities.
- Demonstrated commitment to ensuring compliance with Workplace Health & Safety.
- Willingness to accept responsibility for quality of their own work.
- Demonstrated ability to work in a team environment.
- Knowledge of construction task management.
- Demonstrated relevant industry experience.

OTHER SPECIAL REQUIREMENTS AND WORKING CONDITIONS

- Adaptable to change.
- Able to work in exposed conditions (Sun, wind, rain etc).
- The employee may need the ability to work in confined spaces.
- The employee will need the ability to work at heights.
- Be prepared to travel intra and interstate from time to time to undertake work.
- Satisfactory pre-employment health assessment.

Position Profile



- Ability to obtain appropriate licences and certificates.
- Be prepared to work reasonable amounts of overtime if required.
- Be prepared to undertake further training.
- Participate in after hours roster/emergency callouts.
- Be willing to take on leadership roles as agreed.
- Available for work on after hours roster.