

Position Profile



Position Title: Live Line Linesperson

Position No:

Supervisor/Manager Title: Work Group Leader

Business Unit: Distribution

Work Group: Field Delivery

Classification: TSP4

Date Evaluated:

Date Reviewed:

POSITION PURPOSE

- A multi skilled or specialist worker exercising trade skills under limited supervision and assisting in the provision of on-the-job training to others in their work team.
- This position is responsible for completing overhead and underground maintenance and construction tasks on the job site, to meet quality and time targets.
- This position is responsible for completing overhead and underground maintenance and minor construction tasks in a service and response role, on the job site, to meet quality and scheduled time targets.

KEY ACCOUNTABILITIES

- Ensure satisfactory customer relations are maintained.
- Responsible for performing tasks to meet cost, quality and time targets.
- Responsible for the installation and maintenance tasks in accordance with appropriate standards, work practices and regulations in a timely, efficient and safe manner.
- Responsible for maintaining eligibility for required certification and authorisation.
- Responsible for collecting and recording of information associated with work activities in an accurate and timely manner.
- Responsible for employees under their direction of a lower or similar classification.
- Responsible for identifying and implementing risk control measures to provide a safe work environment.
- Responsible for the coordination of activities when required, to ensure successful completion of allocated tasks.
- Responsible for providing technical instruction and guidance to the team.
- Compliance with all relevant Legislation, standards, work procedures and practices.
- Demonstrate a personal commitment to Ergon Energy's Safety & Environmental Programs, QA and Equal Employment Opportunity objectives, to ensure personal safety and the safety of others, a workplace free from discrimination and harassment and a philosophy of quality assurance and pollution prevention.
- Contribute to the continuous improvement of the Ergon Energy Safety Management System and the local area Health and Safety Program and undertake all work in accordance with Ergon Energy's Workplace Health and Safety policies and procedures.

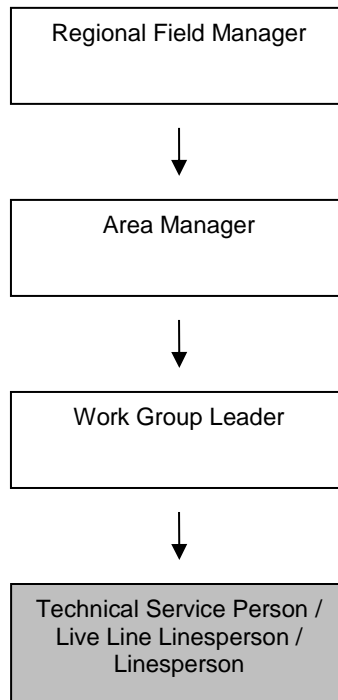


DUTIES

- Performs skilled trade work commensurate with experience & accreditation.
- Ensure completion of on-site risk assessments and implement control measures in line with the employee's level of skill and training.
- Install, repair, commission and maintain various items of electrical equipment and plant.
- Maintenance and minor repair of standard plant, tools and equipment.
- Comply with quality systems and standards.
- Ensure correct completion of relevant documentation in line with systems and processes.
- Maintain high level of customer service focus.
- Lead and mentor team members.
- Responsible for the care and safe use of assigned vehicles /plant, tools/ equipment, hazardous substances.
- Provide guidance and instruction to others within scope of experience & accreditation.
- Assist in the provision of on the job training to employees at a similar or lower classification level.
- Prepare progress reports as required.
- Perform inspections on overhead and underground plant and equipment.
- Perform HV Switching Operations up to and including level 3.
- Constructing, maintaining, operating and repairing distribution substation, lines and DSA plant and equipment.
- Coordination of Construction, Maintenance, operation and repairing of distribution substation, lines and DSA plant and equipment.
- Use relevant Corporate computer based applications.
- Test, inspect and record defects found in distribution system.
- Constructing and maintaining communications pilot and fibre optic cable (excluding testing, terminating and joining of fibre optic cables).
- Perform routine testing and commissioning of plant, installations and equipment as required.
- Performs live line work.
- Identify, implement and document minor design variations to accommodate field conditions
- Perform initial connections on domestic and light industrial premises as required.
- Investigate and report customer and network incidents involving electrical shock.
- Perform basic supply and voltage problem investigations.

Position Profile

ORGANISATION CHART



JOB DIMENSIONS AND RELATIONSHIPS

Liaise with internal and external customers.

Required to work under limited supervision.

Attends team meetings as required.

Promotes and maintains good working relationships with stakeholders and associates.

Achieves set targets and goals with limited direction.

Financial:

Subordinate staff payroll	\$	Direct relationship to Capital Works Budget	\$
Operating Budget	\$	Other budget influences	\$

PERSON SPECIFICATION

EDUCATION / CERTIFICATION

Essential

- Year 10 education or equivalent demonstrated relevant work experience.
- Ability to obtain and maintain relevant Drivers and/or Plant Licences.
- Maintain Relevant Statutory requirements.
- Any one or a combination of the following:
 - * Qld ELB Trade Certificate (EFM)
 - * Qld ELB Trade Certificate (ELP)
 - * Qld ELB Trade Certificate - Cable Jointer (open or restricted)
 - * Authorisation as ECO (level 2 or 3).
- Up to Level 3 HV Switching authority.
- Authorisation of a Live Linesperson to the appropriate level.

Desirable

- Specific licences to be included for individual requirements (refer competency matrix).
- First Aid Certification (level as required by work location needs).

SELECTION CRITERIA

Essential

- Detailed knowledge of relevant legislation and standards.
- Computer and application skills including word, email and window based applications.
- Working knowledge of overhead / underground construction, operation and maintenance, and associated activities.
- Demonstrated knowledge of and commitment to ensuring compliance with Workplace Health & Safety.
- Demonstrate ability to ensure quality output.
- Demonstrated ability to work in a team environment.
- Ability to provide guidance and instruction to others.
- Ability to write progress reports.
- Knowledge of construction task management.
- Demonstrated relevant industry experience.
- Demonstrated ability in task management.
- Demonstrated experience as live linesperson up to 132 kV and an ability to work within a live line team.

OTHER SPECIAL REQUIREMENTS AND WORKING CONDITIONS

- Adaptable to change.
- Able to work in exposed conditions (Sun, wind, rain etc).
- The employee may need the ability to work in confined spaces.
- The employee will need the ability to work at heights.
- Be prepared to travel intra and interstate from time to time to undertake work.
- Satisfactory pre-employment health assessment.
- Ability to obtain appropriate licences and certificates.
- Be prepared to work reasonable amounts of overtime if required.
- Be prepared to undertake further training.
- Participate in after hours roster/emergency callouts.
- Be willing to take on leadership roles as agreed.
- Available for work on after hours roster.